

# PAX-0100



## **Introduction:**

The **PAX-0100** Linear Actuator is a compact, low-noise device crafted from durable aluminum alloy, delivering precise and smooth linear motion. With IP54-rated protection, it's ideal for automation, furniture, and industrial applications requiring strength, stability, and quiet operation.



### **Key Feature :**

- *Premium Build Quality: Constructed with high-grade materials, ensuring durability and longevity.*
- *Rugged Metal Housing: Designed to perform efficiently in harsh and demanding environments.*
- *Corrosion-Resistant Tubes: Stainless steel telescopic and outer tubes provide superior resistance to rust.*
- *Advanced Sealing Technology: Offers dustproof and waterproof protection, enhancing reliability in various settings.*
- *Energy-Efficient & Quiet Operation: Low power consumption with noise levels under 50dB, ensuring a quiet working environment.*
- *Built-In Clutch System: Protects internal gears and motor from damage under stress.*
- *Motor Safety Features: Includes overload and overheating protection for long-lasting operation.*
- *Self-Locking Mechanism: Automatically holds position after stopping without the need for continuous power.*
- *Maintenance-Free Operation: Designed for long-term use without the need for routine upkeep.*
- *Optional Hall Sensor: Enables synchronized control of multiple actuators when paired with the appropriate controller.*

### **Applications :**

- *Home Automation*
- *Renewable Energy*
- *Medical Equipment*
- *Agriculture*
- *Industrial & Engineering*
- *Furniture*
- *Specialty Systems*

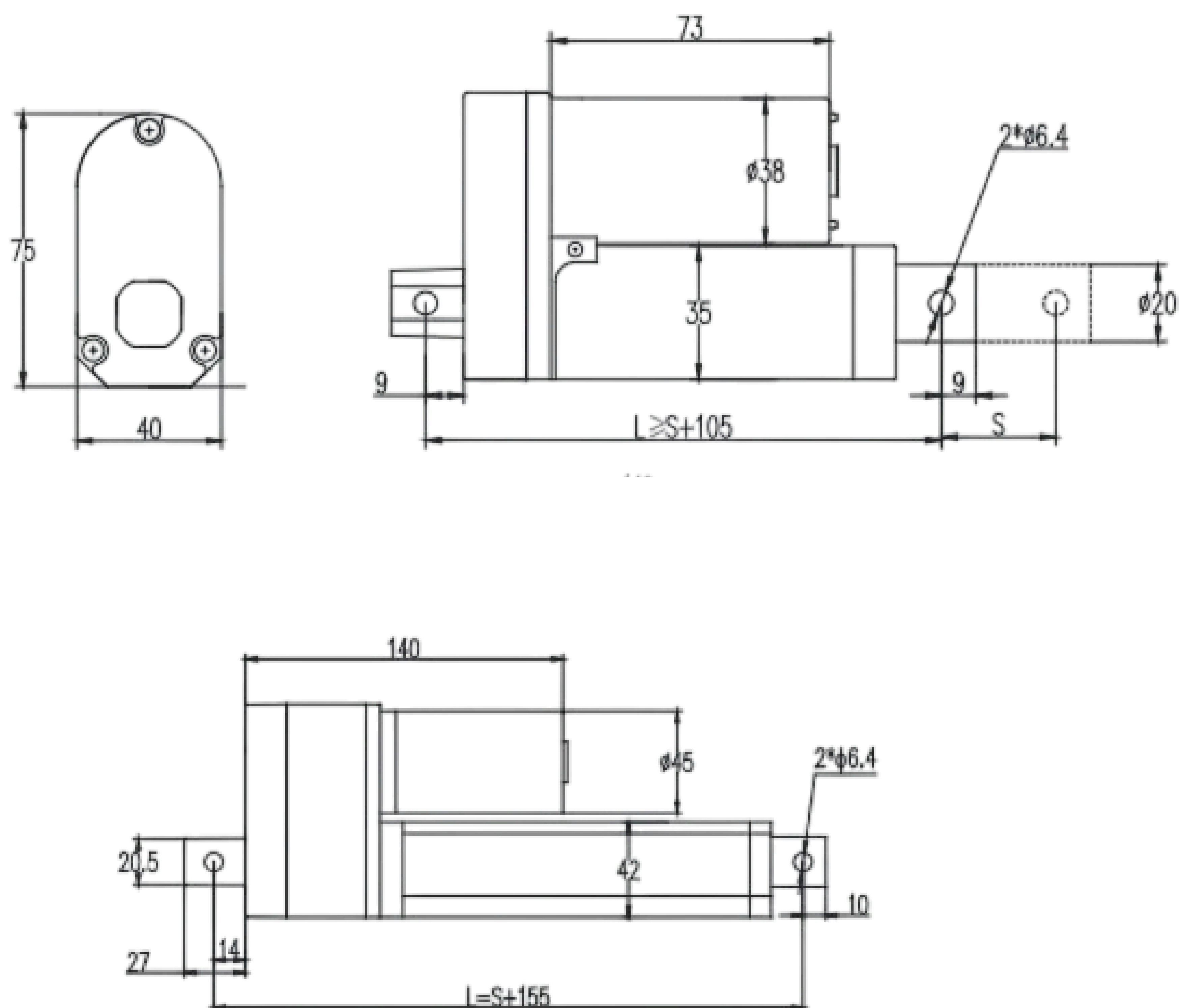




**Specification :**

<b>Model</b>	PAX-0100
<b>Voltage Options</b>	12V / 24V / 36V / 48V DC (24V recommended)
<b>Stroke Range</b>	10 mm to 1500 mm
<b>Speed Options (No Load)</b>	5±1 mm/s, 10±2 mm/s, 15±3 mm/s, 20±4 mm/s, 30±6 mm/s, 40±8 mm/s, 60±12 mm/s
<b>Max Load Capacity</b>	900N (90 kg / 200 lbs) at 5 mm/s
<b>No-Load Current</b>	0.8-1A at 12V; 0.4-0.5A at 24V
<b>Full-Load Current</b>	2.5-3A at 12V; 1.4-1.6A at 24V
<b>Duty Cycle</b>	10% (Max 2 minutes continuous use)
<b>Shaft Diameter</b>	20 mm
<b>Mounting Hole Diameter</b>	6.5 mm
<b>Housing Material</b>	Stainless Steel
<b>Stroke Rod Material</b>	Stainless Steel
<b>Gear Material</b>	Steel Alloy
<b>Motor Type</b>	Brushed DC Motor
<b>Plug Standard</b>	Two-core or Six-core (with Hall effect sensor)
<b>Operating Temperature</b>	-26°C to 85°C
<b>Operating Noise</b>	Approximately 45-55 dB
<b>IP Rating</b>	IP65 / IP68

**Drawing :**



**Product Detail:**

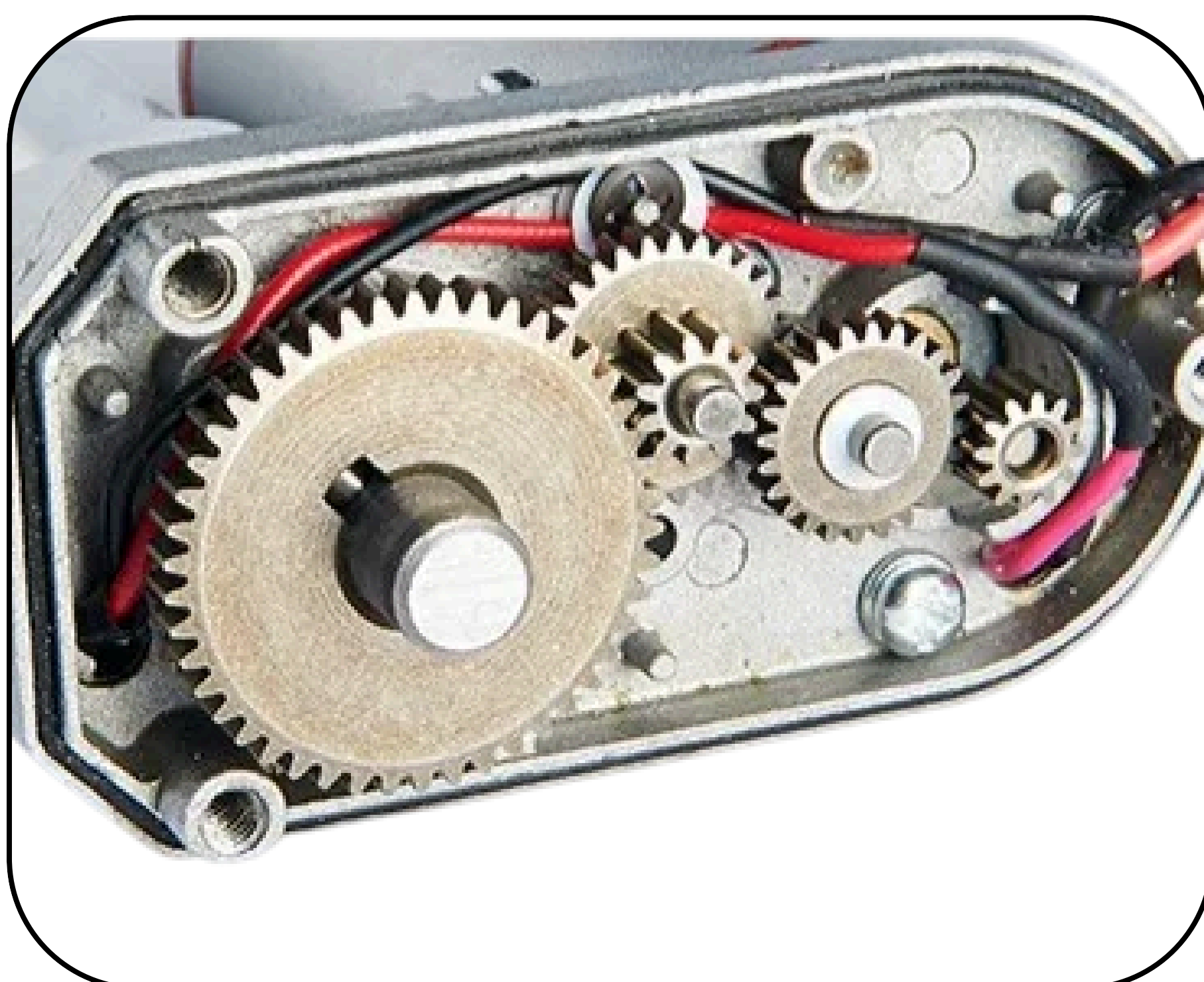
**4 Major Advantages -**



**1**

**Stainless Steel Screws**

Rust & Corrosion Resistant



**2**

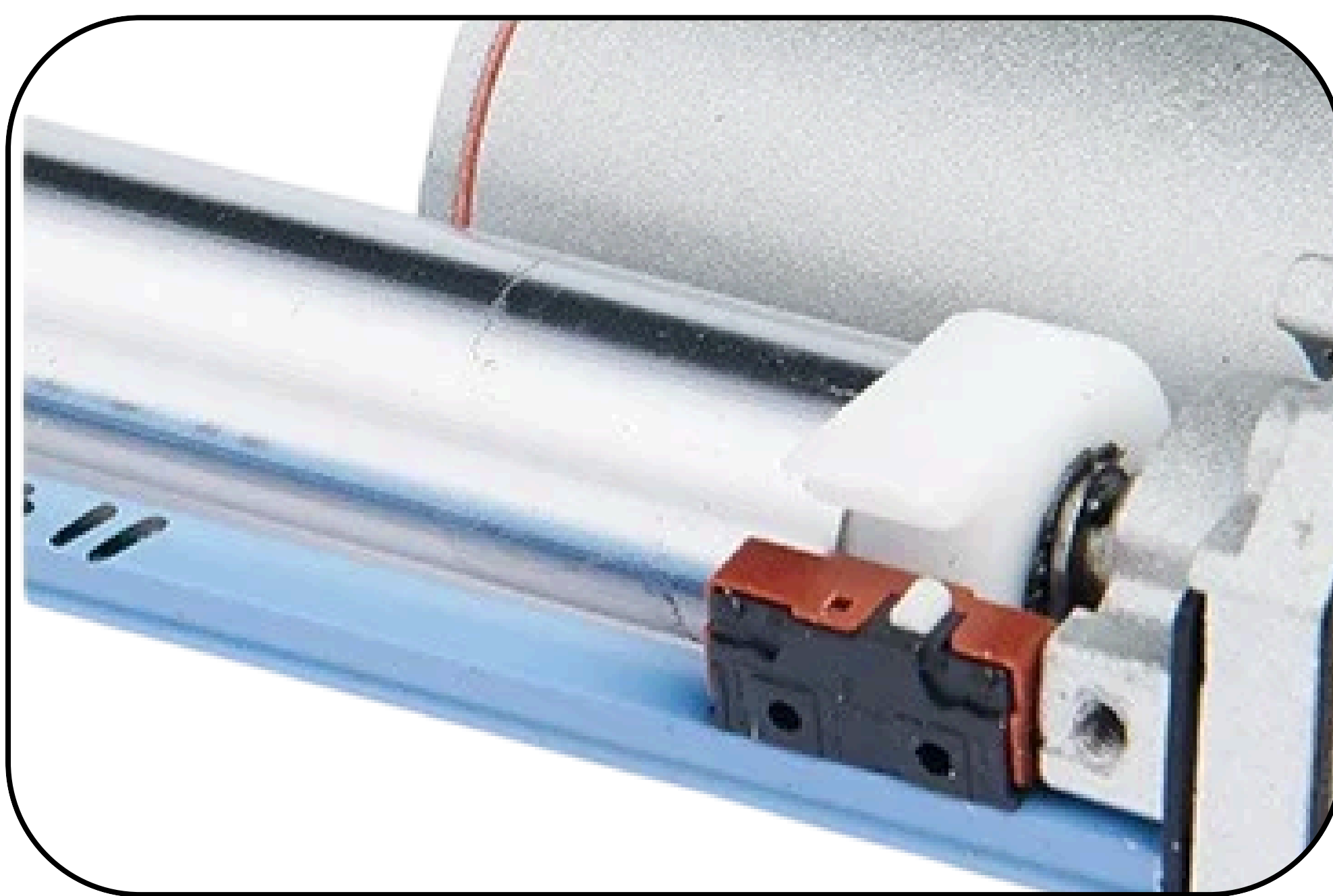
**turbine & worm gear structure**

Low Noise & Vibration



### **Product Detail :**

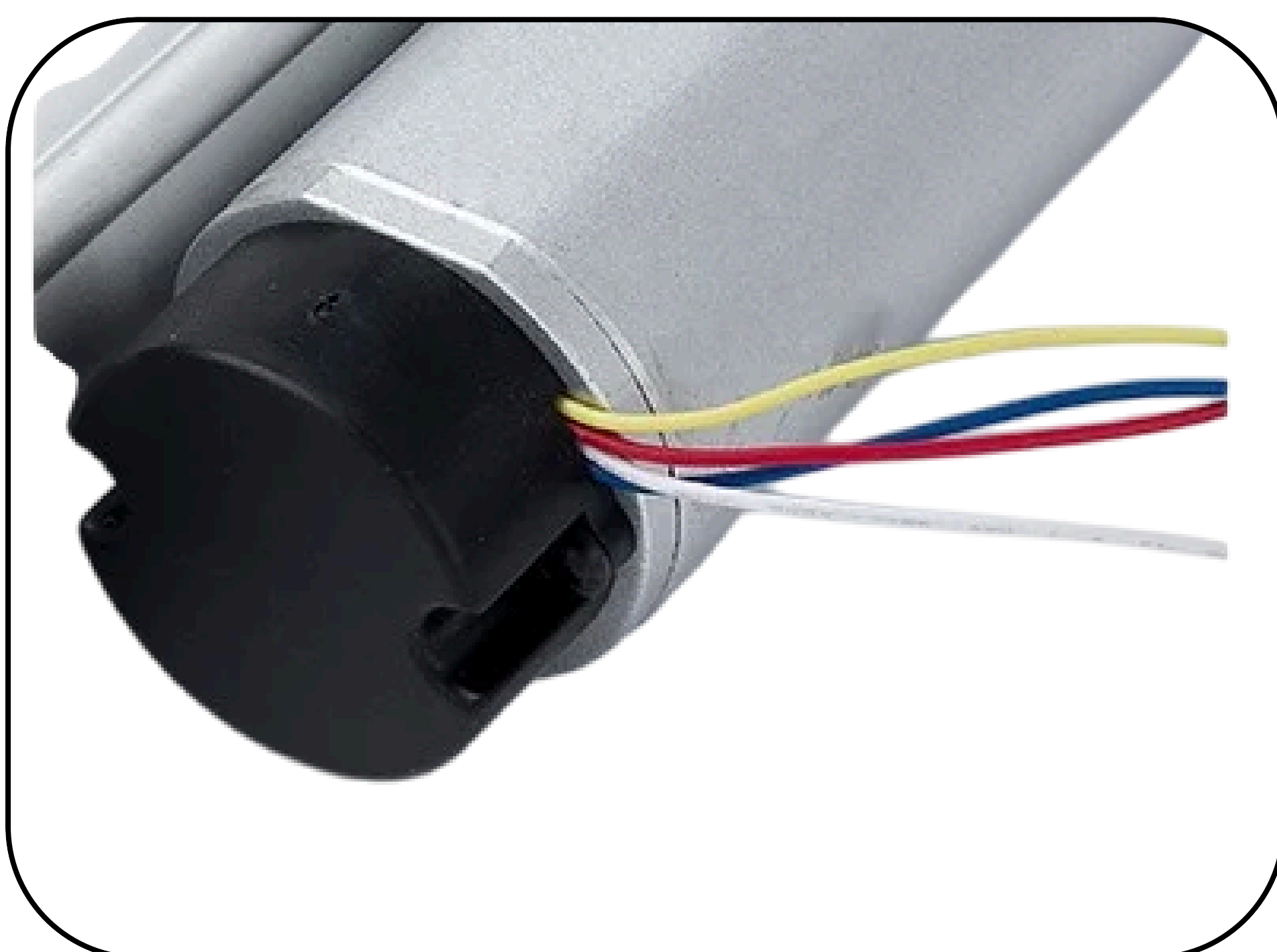
#### **4 Major Advantages -**



**3**

#### **High Quality Alloy Material**

Sturdy Appearance &  
Tight Structural Design



**4**

#### **Model Output**

Dual Hall signal output can be added





***Size Range :***

