

PAX-0220



Introduction :

Our Linear Actuator is engineered to deliver outstanding performance, durability, and versatility across a wide range of industrial applications. Crafted from high-quality materials and designed for maximum efficiency, it ensures precise, smooth linear motion. Whether for automation, manufacturing, or custom machinery, our actuator offers a dependable solution that meets the demands of modern industry.

Key Feature :

- *High-quality aluminum alloy & stainless steel construction for strength and durability*
- *Built-in internal limit switch for safe, automatic stop*
- *Equal thrust and pull force for stable performance*
- *Quiet operation below 50 dB for noise-sensitive environments*
- *IP65-rated for dust and water resistance*



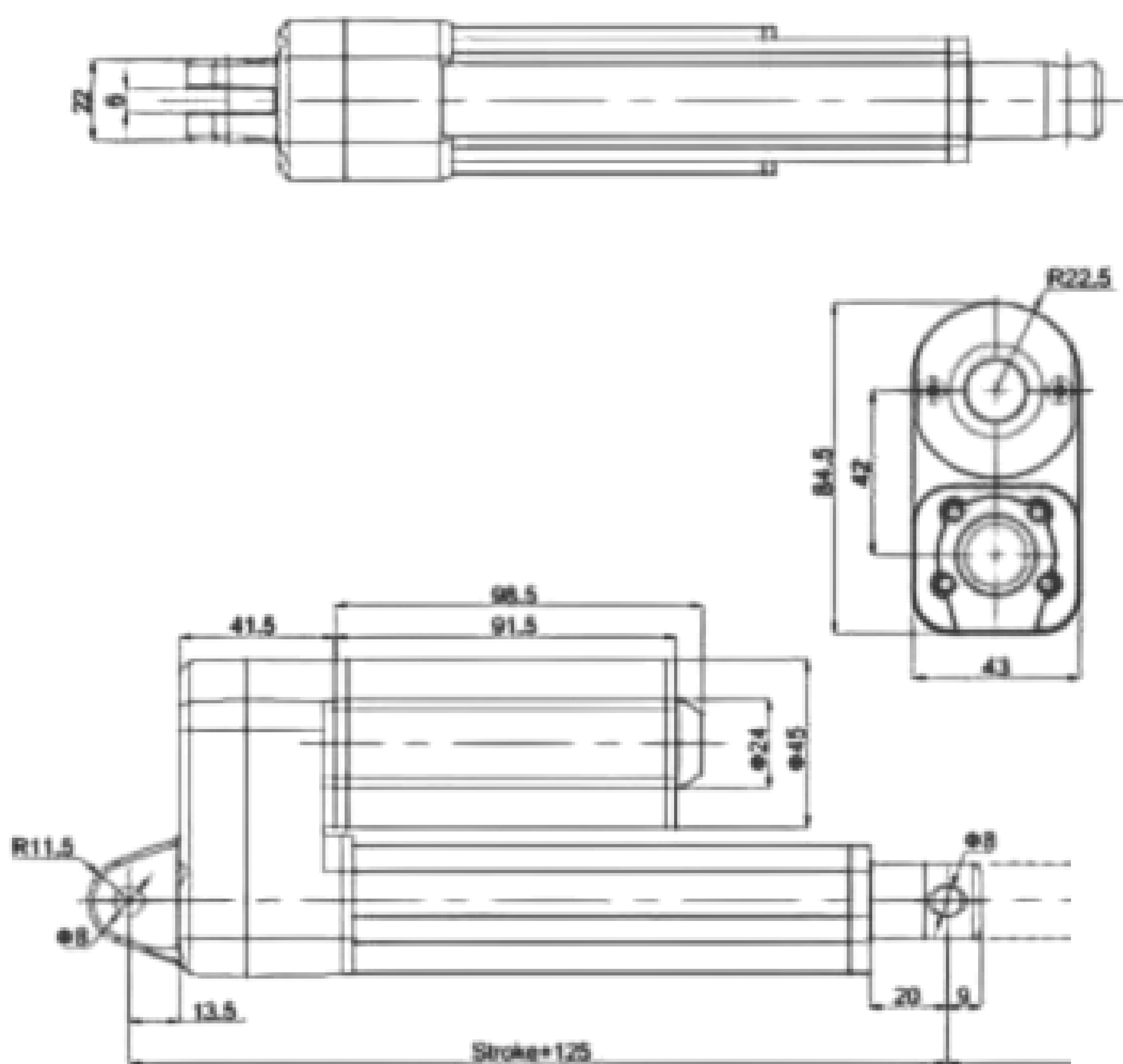
Specification :

Model	PAX-0220
Material	Stainless Steel & Aluminum Alloy
Gross Weight	1810g / 63.8oz
Product Size	55x8x4 cm / 21.7×3.1×1.6 in
Input Voltage	24V
Maximum Load	2000N
No Load Speed	7 to 20 mm/s
Stroke	200mm / 7.9 in
Use Frequency	10% (2 minutes on / 18 minutes off)
Stroke Switch	Inner
Ambient Temperature	-15°C to 45°C
Protection Grade	IP65

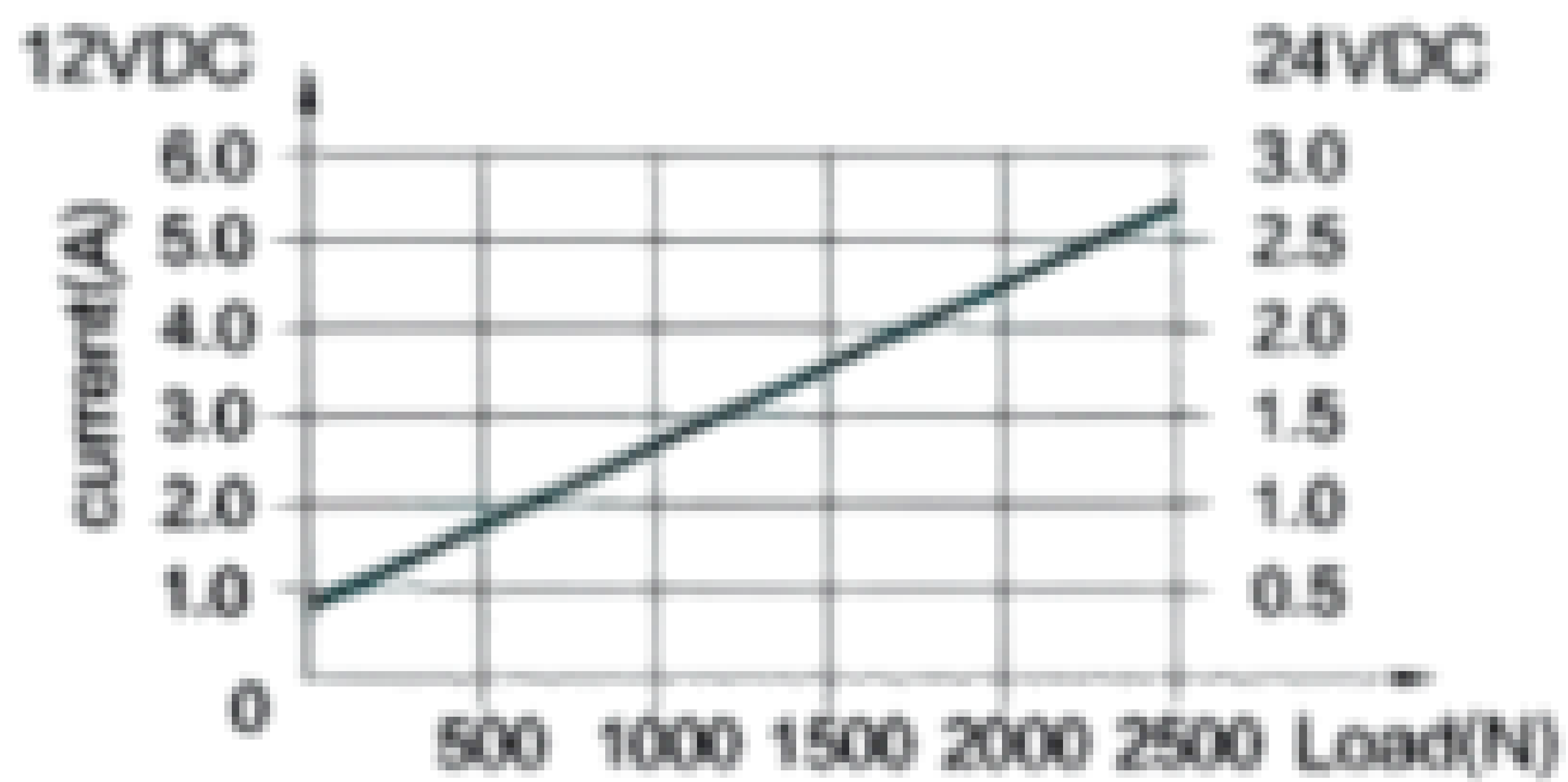
Applications :

- Electric Power
- Machinery Automation
- Metallurgical Equipment Control
- Mining Operations
- Petroleum & Chemical Valve Control
- Automated Transportation Systems
- Lifting & Hoisting Systems
- Construction Machinery
- Agricultural Automation

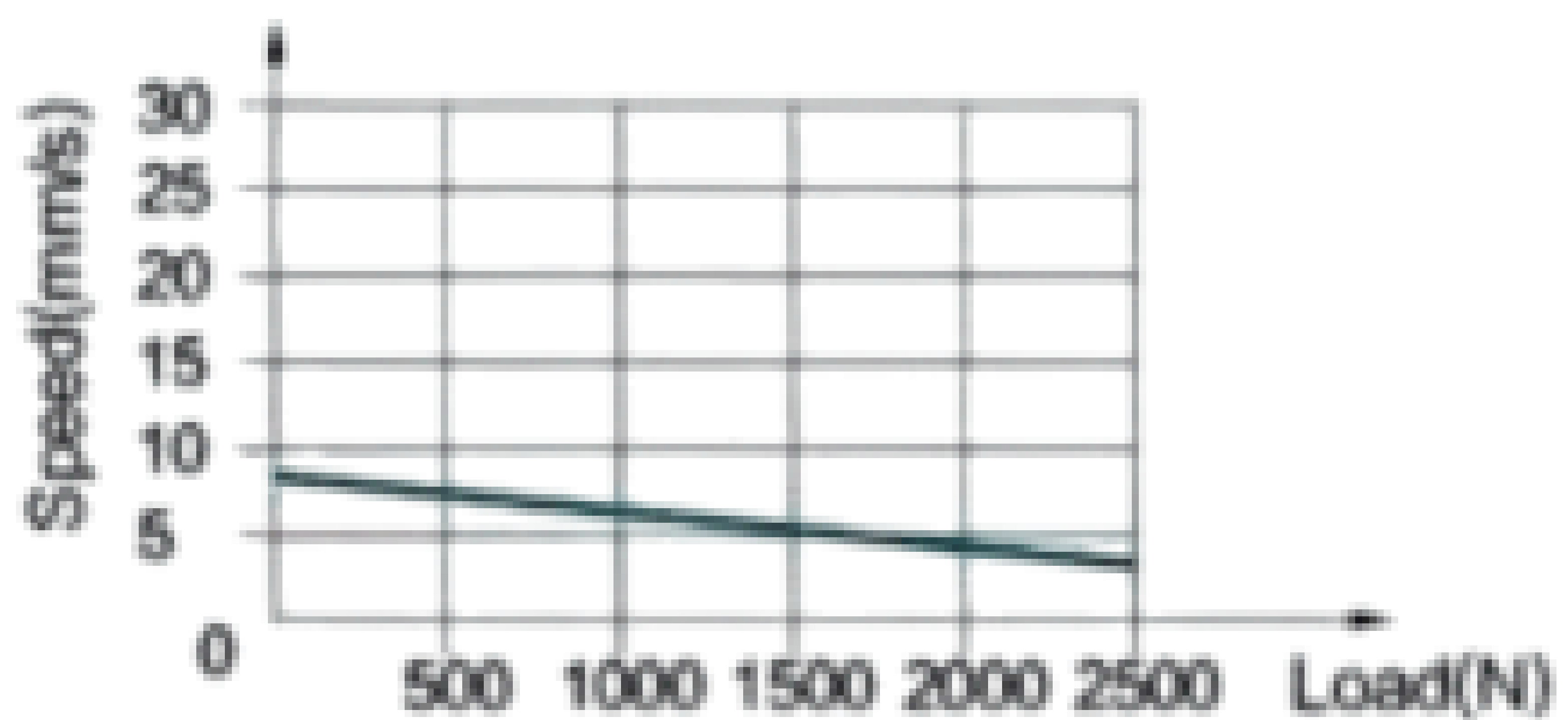
Drawing :



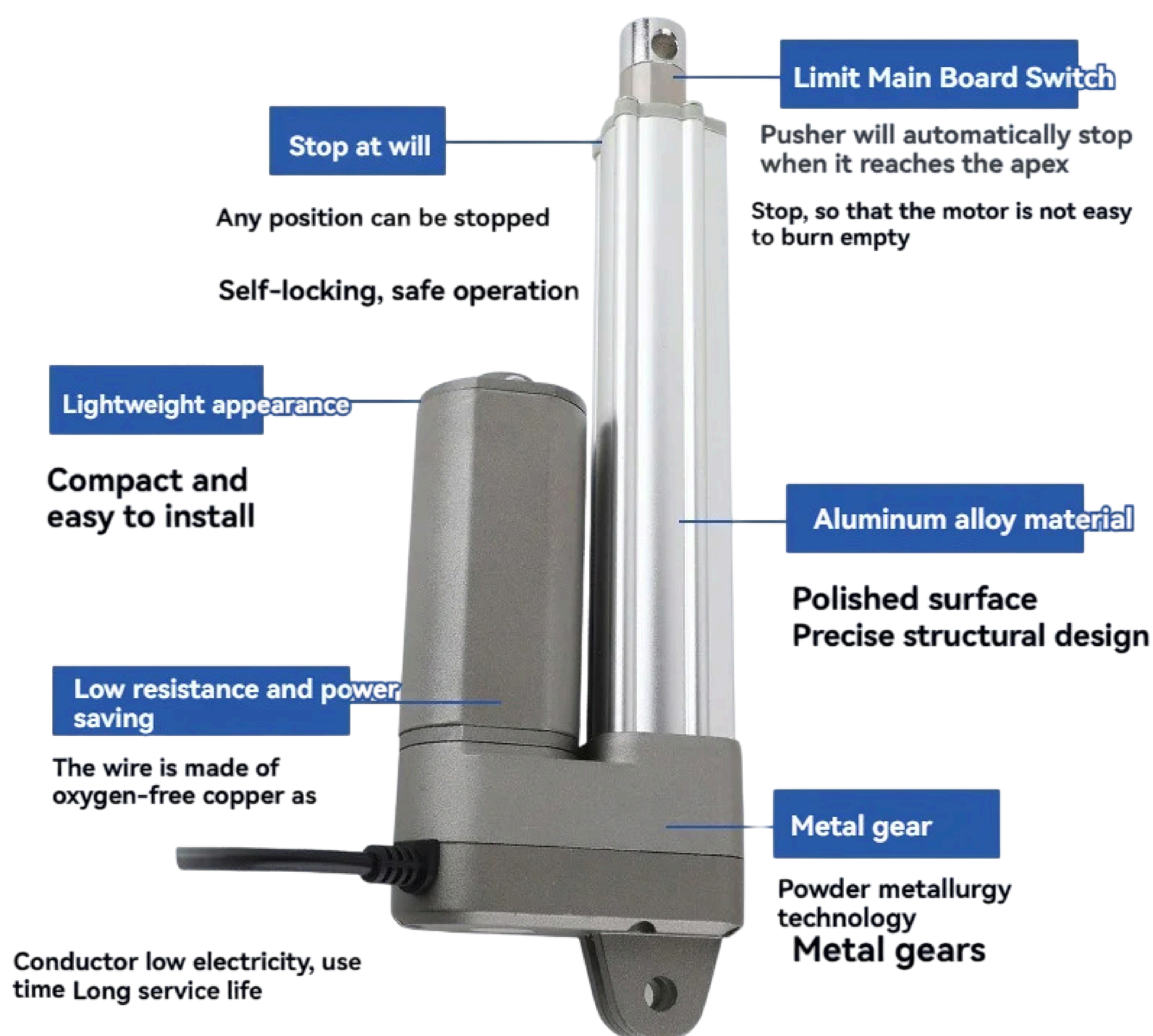
Load VS Current:



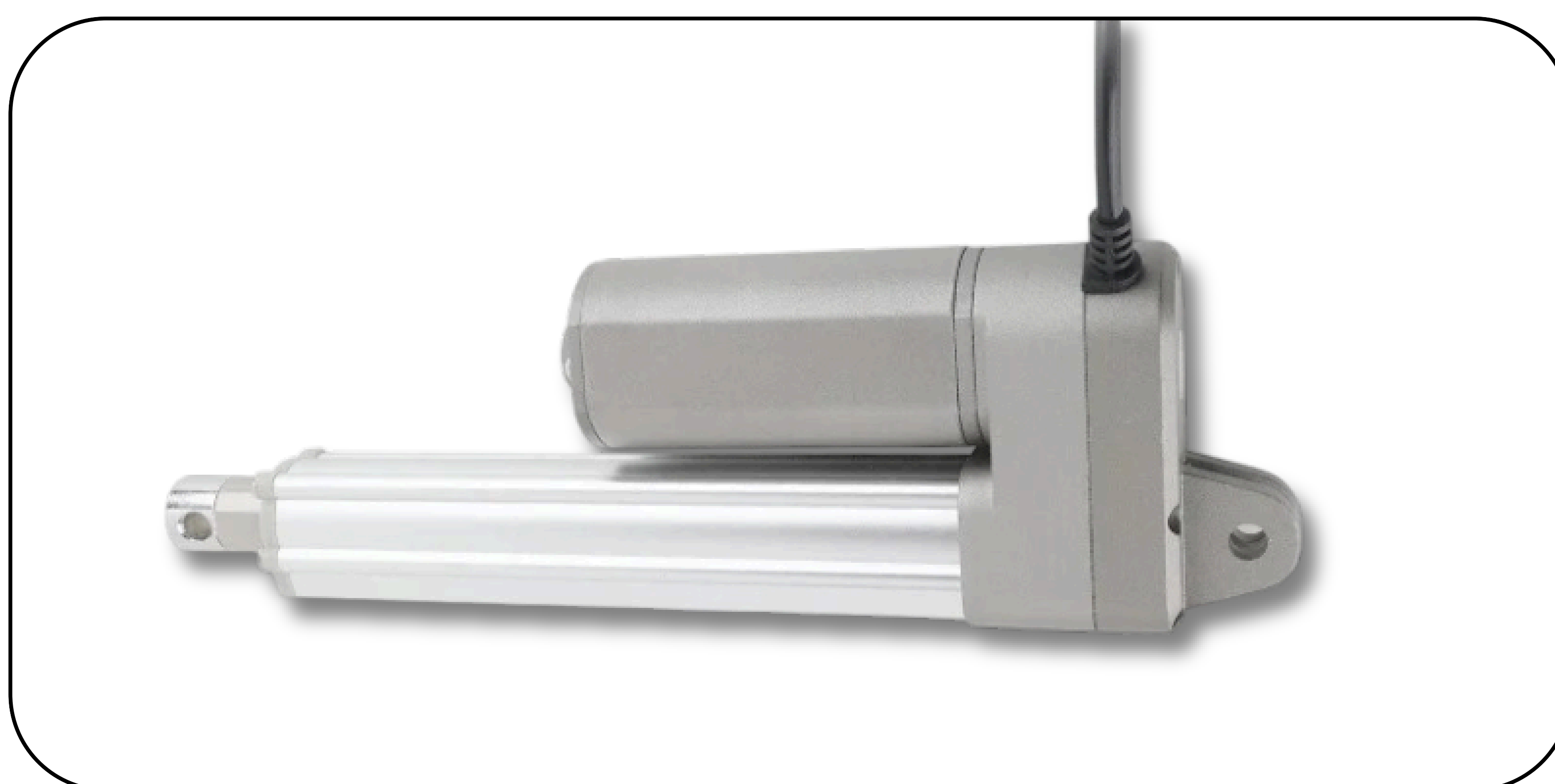
Load VS Speed:



Product Detail :



Product Detail:



Product Detail:

