

# PAX-0700



## **Introduction :**

*Experience powerful and reliable motion with our high-performance linear actuator, designed for a variety of automation applications. Featuring a robust 60W motor, it handles loads up to 8000N with smooth and quiet operation—perfect for electric recliners, therapy tables, and lifting systems.*

## **Key Feature :**

- *High Load Capacity: Up to 8000N*
- *Voltage Options: 12VDC / 24VDC*
- *Powerful 60W Motor*
- *Fast Speed: Up to 36mm/s*
- *Easy Installation*
- *Adjustable Stroke: 50mm–800mm*
- *Low Noise Operation*
- *Built-in Limit Switches*
- *Durable, Robust Design*



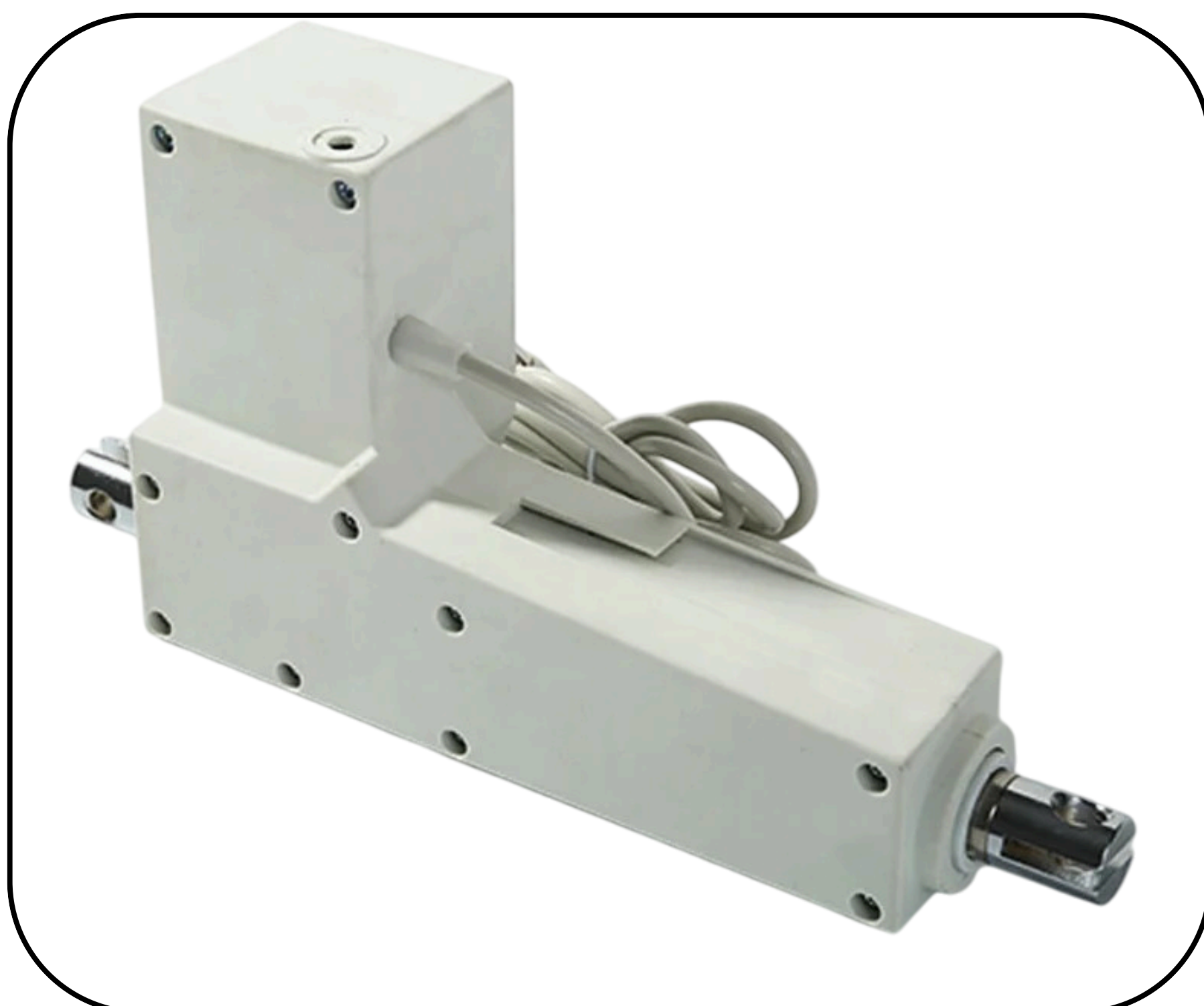
Specification :

Model	PAX-0700
Input Voltage	12VDC / 24VDC
Max Load	8000N
Maximum Current	2.5 A (24V) / 5 A (12V)
Motor Output	60W
Max Speed	36mm/s
Stroke Length	50-800mm (customizable)
Protection Level	IP54
Operating Temperature	-4°F to 145°F (-20°C to 65°C)
Color	Silver + Black
Limit Switch	Built-in
Screw Type	T type
Service Cycle	10% duty cycle (up to 2 hrs continuous use)
Mechanical Life	Over 30,000 cycles

Applications :

- Electric Therapy Tables
- Electric Sofas
- Electric Booth Lifting Rods
- Electric Lift Systems

***Product Detail :***



***Product Detail :***

