

PAX-PT200



Introduction :

The PAX-PT200 Linear Actuator is a high-performance solution designed for adjustable beds, offering smooth, silent, and precise movement. Built with a compact yet durable design, it's ideal for residential, medical, and ergonomic furniture applications.

Key Feature :

- *Smooth & Silent:* Advanced motor ensures ultra-quiet operation.
- *Compact & Durable:* Space-saving design with long-lasting build.
- *High Load Capacity:* Handles heavy loads with stability.
- *Custom Stroke:* Adjustable stroke for flexible positioning.
- *Energy Efficient:* Low power usage with high efficiency.
- *Versatile Use:* Ideal for beds, medical gear, and ergonomic furniture.
- *Easy Installation:* Plug-and-play design for quick setup.



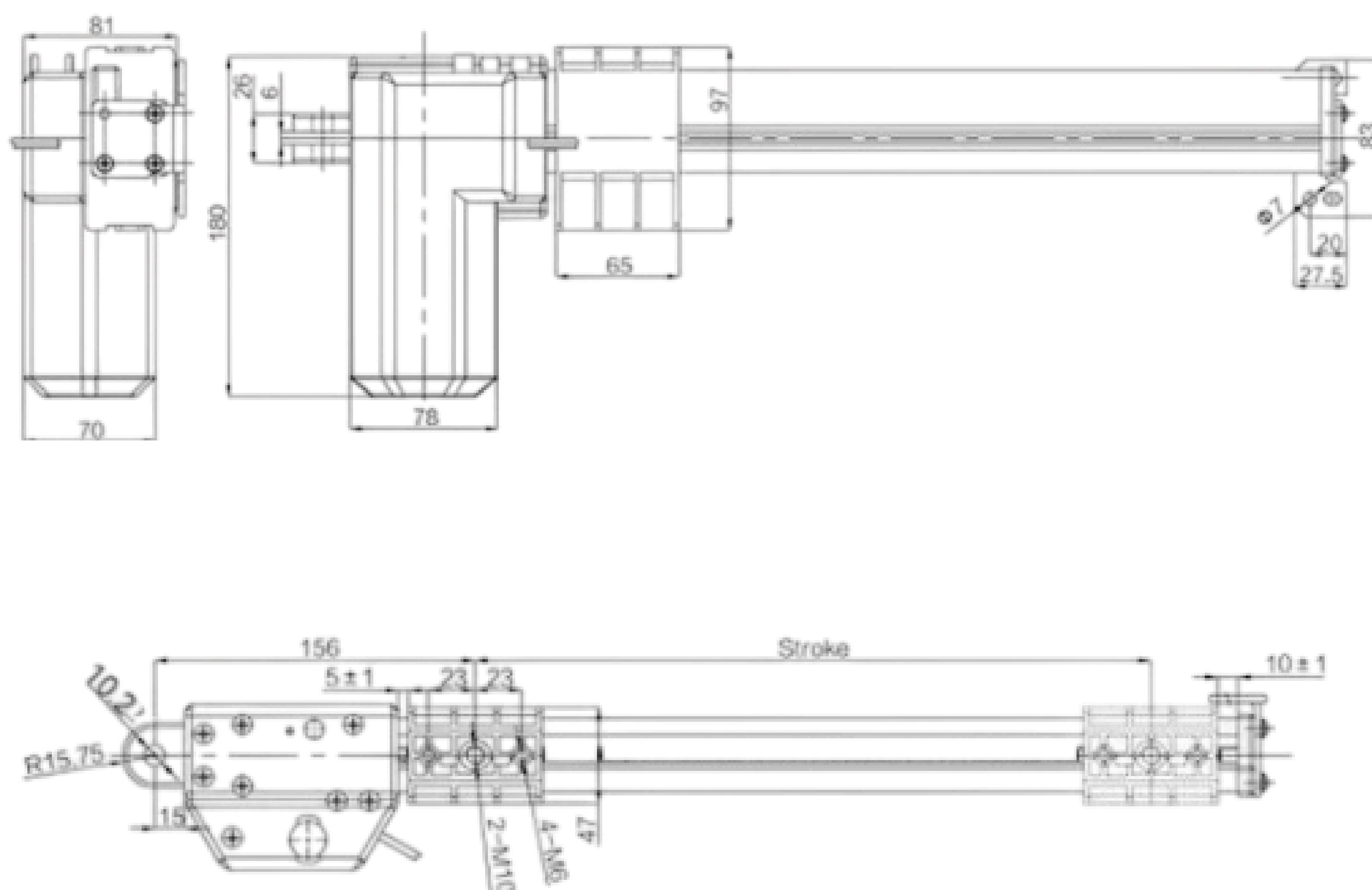
Specification :

Type	PAX-PT200
Thrust	Up to 4000N
Voltage	12V / 24V DC
Installation Dimension	Stroke (S) + 155mm
Input Voltage	12V / 24V / 36V / 48V DC
Protection Class	IP43 (Dust and water-resistant)
Housing Material	High-strength plastic
Color	Black plastic + natural anodized aluminum
Noise Level	48 dB (unloaded)
Duty Cycle	Max 10% (2 min on / 18 min off)

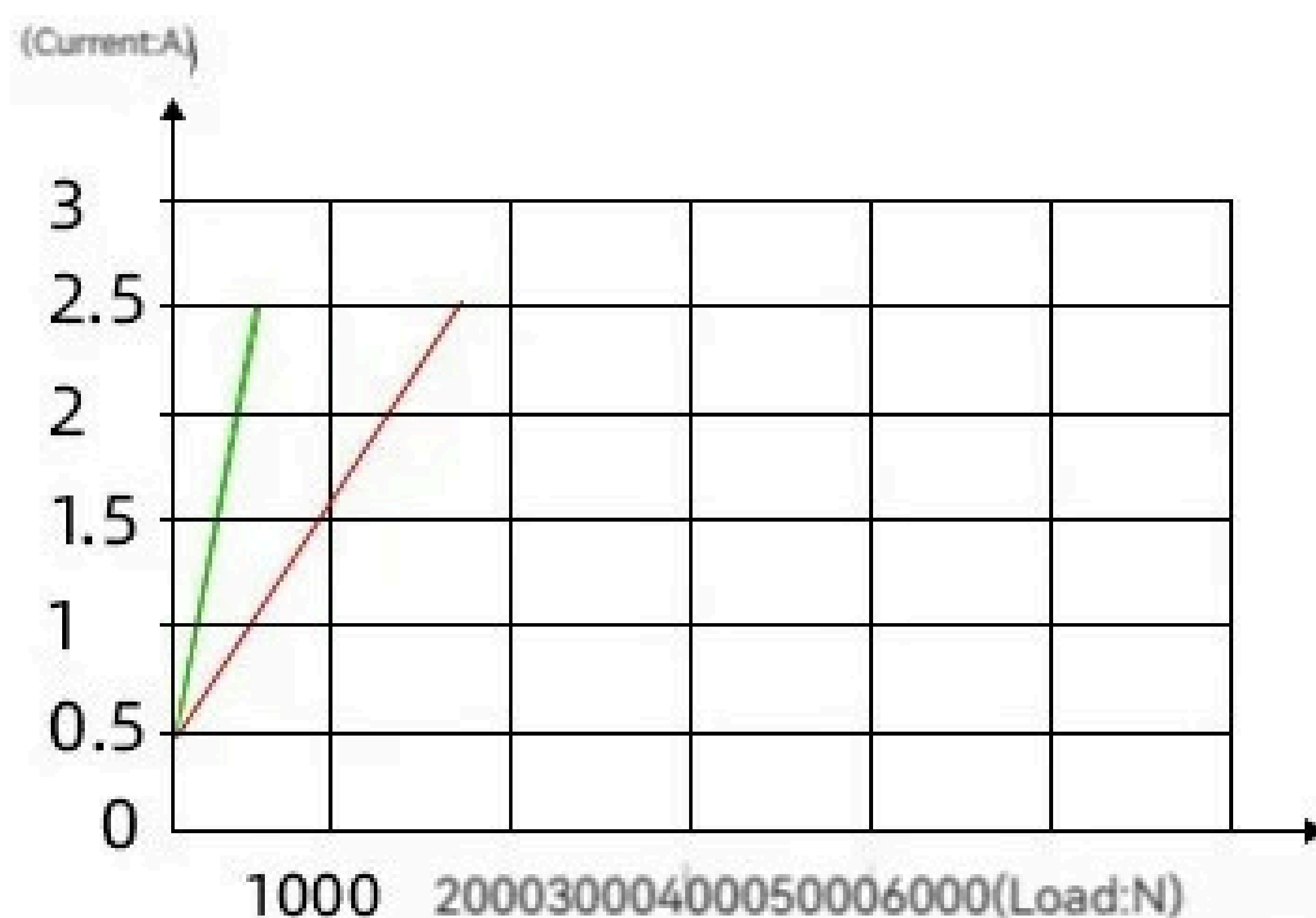
Applications :

- Adjustable electric beds
- Home care and hospital beds
- Ergonomic medical furniture
- Massage and wellness beds
- Smart home sleeping systems

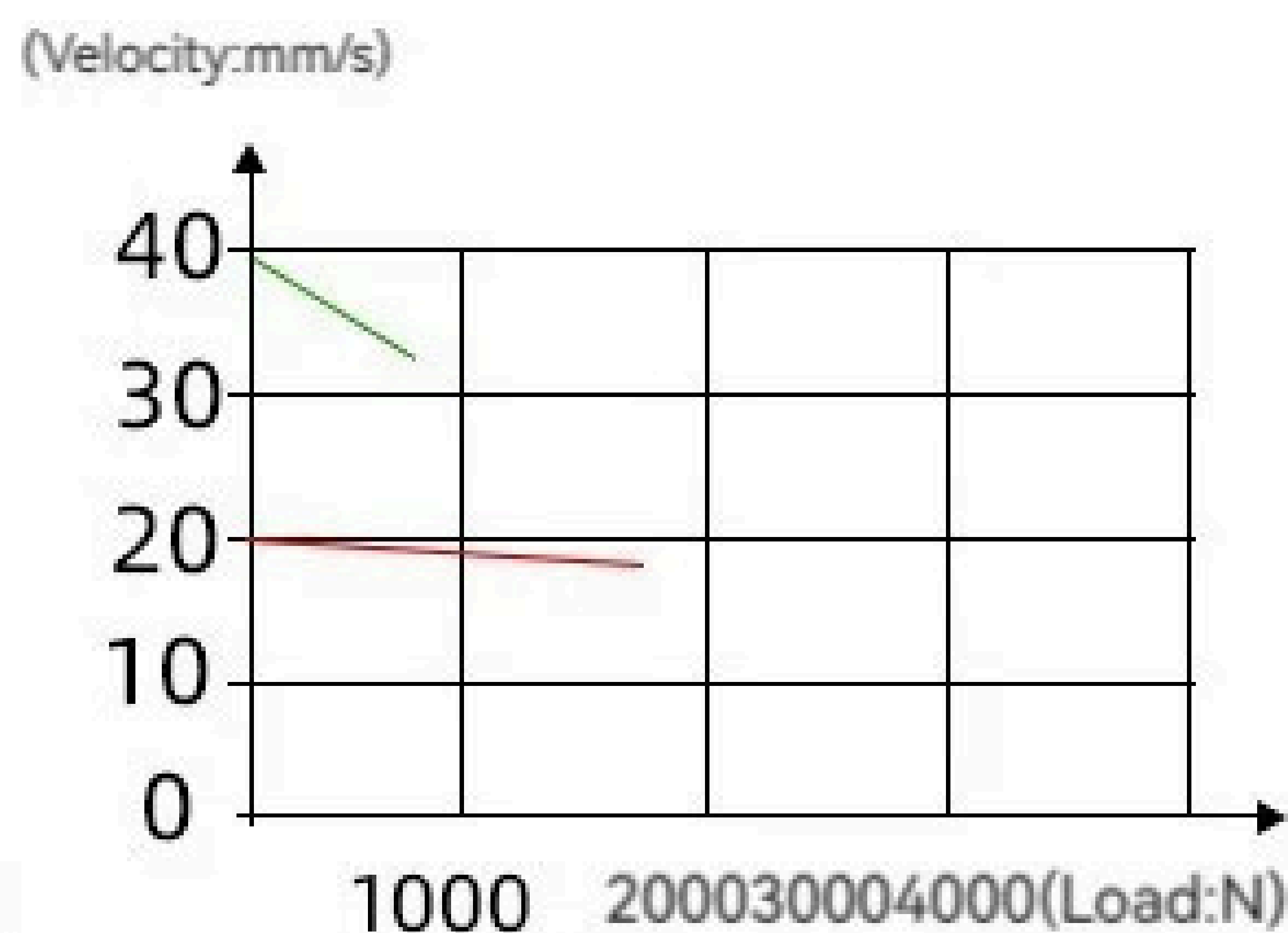
Drawing :



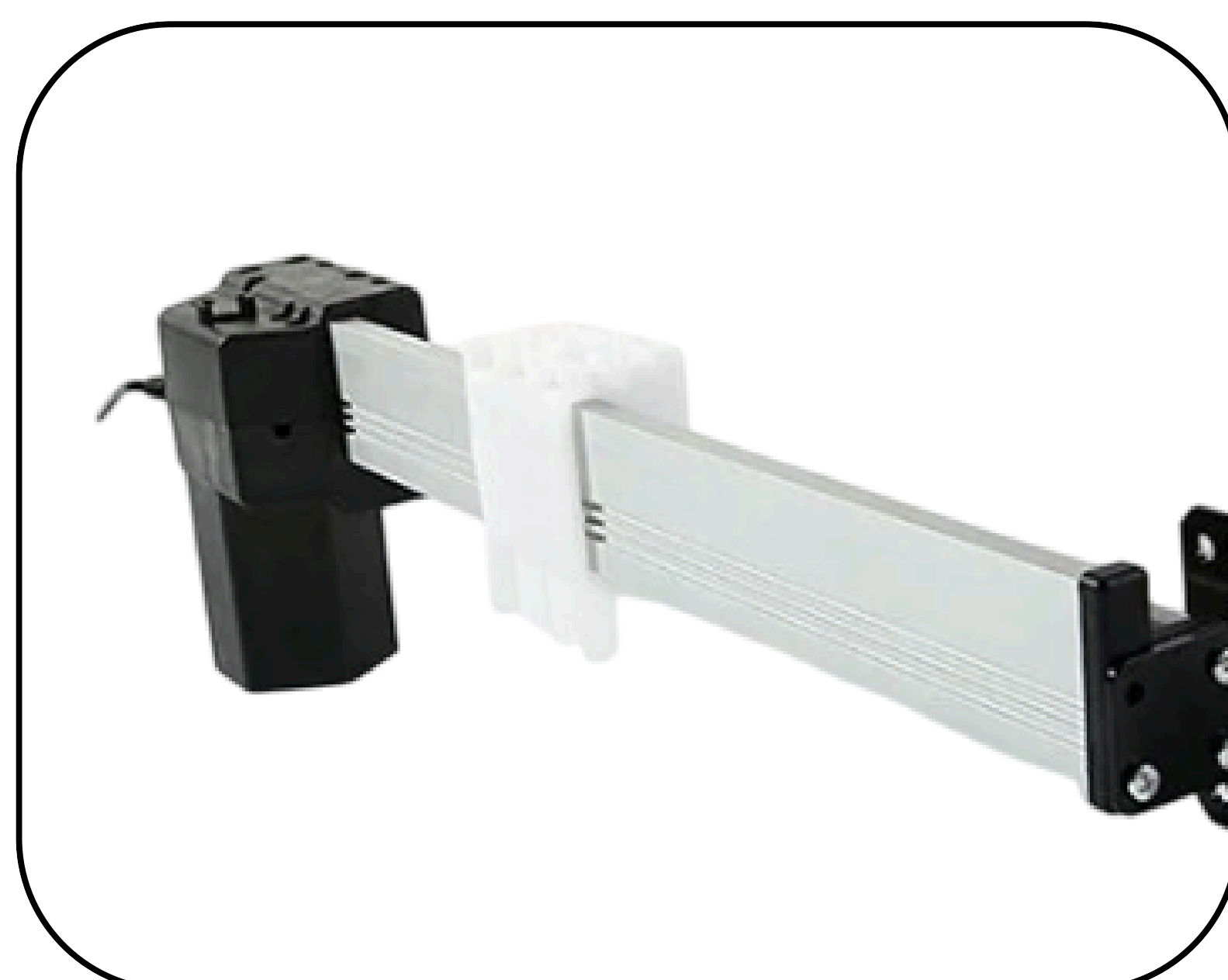
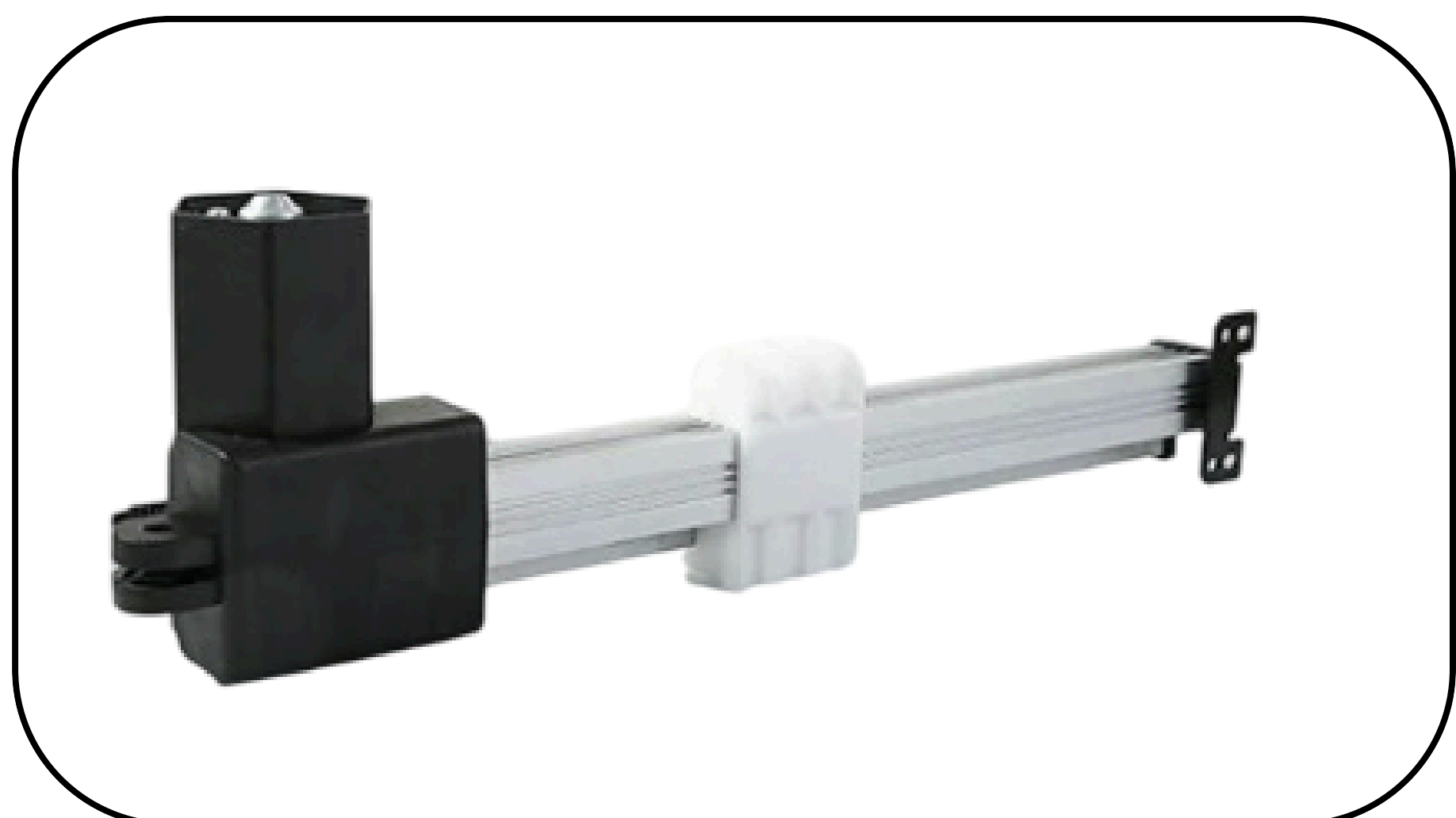
Load VS Current:



Load VS Speed:



Product Detail :



Product Detail:

